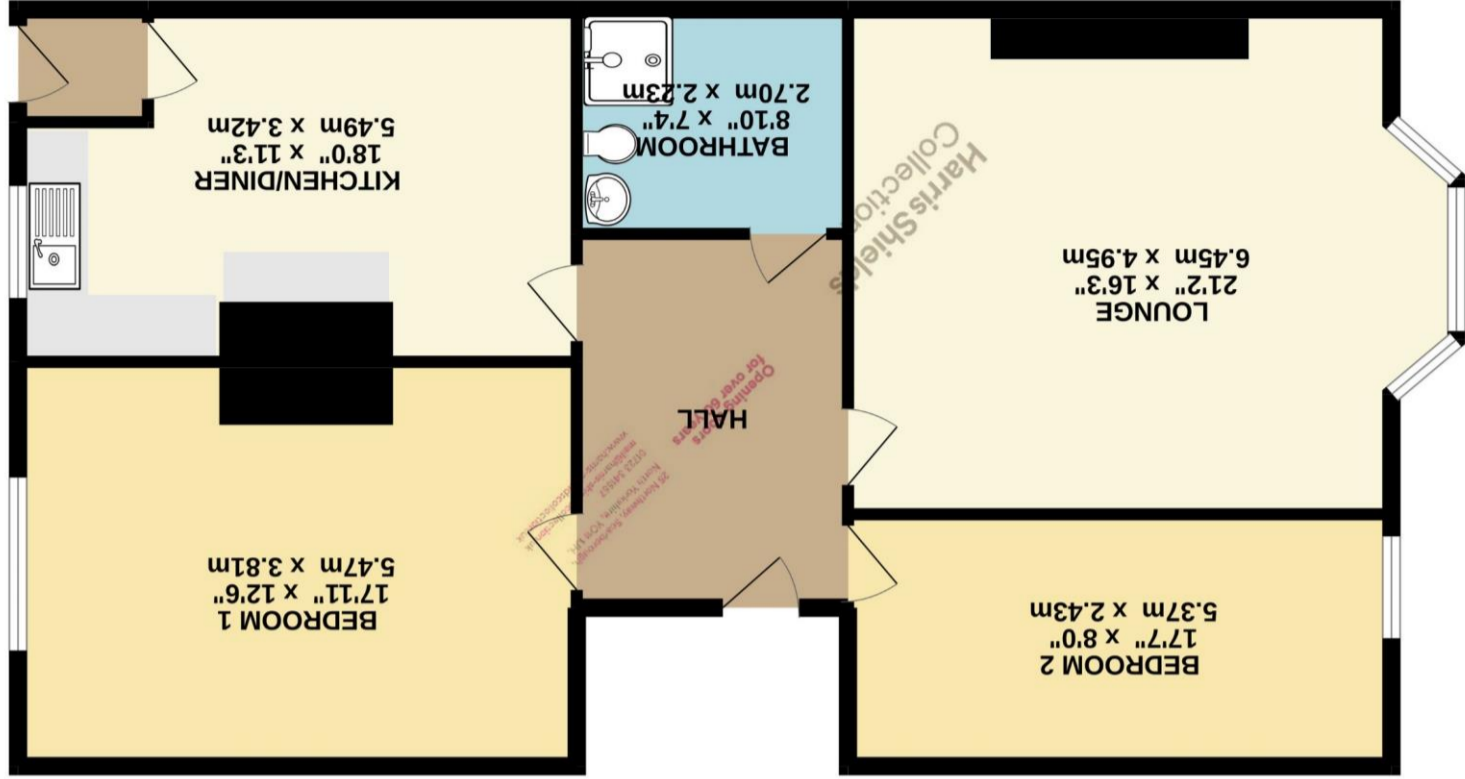


Whilst every attempt has been made to ensure the accuracy of the floorplan contained here, measurements of doors, windows, rooms and any other items are approximate and no responsibility is taken for any error, omission or mis-statement. This plan is for illustrative purposes only and should be used as such by any prospective purchaser. The services, systems and appliances shown have not been tested and no guarantee as to their operability or efficiency can be given.

GROUND FLOOR



2 Savoy Court, 24-25 Prince of Wales Terrace,
 Scarborough, North Yorkshire, YO11 2AN

Harris Shields
 Collection

A two bedroom ground floor leasehold apartment

- ✓ Ground Floor Apartment
- ✓ Two Double Bedrooms
- ✓ 966 Years Leasehold
- ✓ Private Entrance
- ✓ Spacious Rooms
- ✓ No Onward Chain
- ✓ South Cliff Location

Guide Price £90,000

Harris Shields Collection

Harris Shields Collection, 25 Northway, Scarborough North Yorkshire, YO11 1JH

01723 341557

mail@harris-shieldscollection.uk

<https://harris-shieldscollection.uk/>

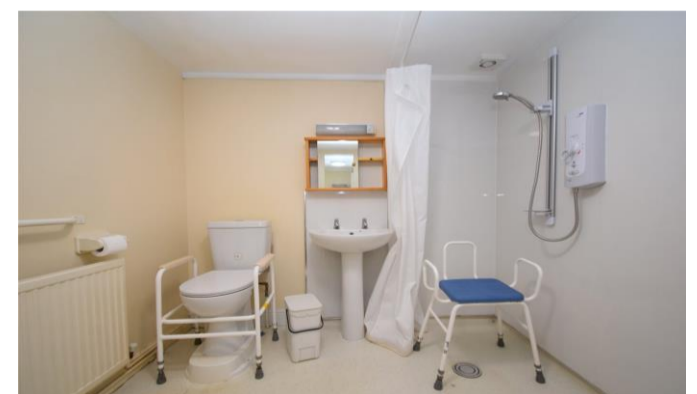
Description

Offered with no onward chain is this spacious ground floor apartment that uniquely benefits from its own private entrance. Situated on the much sought after South Cliff area of Scarborough just a minutes walk from Ramshill Shopping Parade. The accommodation comprises; private entrance door accessed via rear service lane to entrance vestibule, fitted kitchen/dining room, central hallway with door to communal hallway. Front facing large bay fronted sitting room, rear facing master bedroom, bedroom two (also a double) and bathroom/wet room. Scarborough Borough Council tax band B. This is a leasehold property with 966 years remaining. Management/ maintenance charge is approximately £900 per annum. Holiday lets are not permitted.



Additional Information

Council tax band B



Opening doors
for over 60 years

Harris Shields
Collection